



eden project

Eden Project Anglesea Concept

Community Engagement
Feedback Summary
and Response

July 2019



Eden Project and Alcoa of Australia acknowledge Wadawurrung as the Traditional Owners and Custodians of the land on which the Anglesea mine and power station stand and pay our respects.

Welcome to the first Eden Project Anglesea community engagement report. We have developed this report to provide feedback and answer questions we heard during community engagement activities held in May and June 2019.

The Eden Project Anglesea concept is to create ‘a place of extraordinary experiences, fusing science and wonder to immerse visitors in the extremes of the elements – earth, air, water, fire – and in so doing, creating a must-see prelude to a journey on the Great Ocean Road. Eden Project Anglesea is a concept set within the extraordinary landscape of the heath, celebrating, preserving and enhancing the ecology and environment.’

We are delighted and excited by the community interest in the Eden Project Anglesea concept and with the number of people who have engaged in the process. More than 800 people have attended community consultation events and an additional 3,000 people engaged online. This gives us confidence that community members are talking to us and asking the questions they most want answered.

In particular we are excited that the feedback provided has been overwhelmingly supportive of the concept whilst raising a variety of issues, themes and questions that we feel can be worked through with community and key stakeholders.

It is important to note that we are still in the concept phase and most critical for us is understanding what the local community and key stakeholders want, need, and hope to achieve from the project. Community input is vital to the creation of an Eden Project that both

represents and benefits this beautiful part of the world. As such, our continuing ambition is to provide many diverse opportunities for community involvement and feedback.

This report represents what we have heard from the community through drop-in sessions, a survey, round table sessions and audiences with the Co-Founder of Eden Project, Sir Tim Smit. We have analysed the most frequently asked questions and have provided answers where we can at this early stage.

Overall, people are very positive about the concept - there was a genuine sense of excitement and anticipation. People saw the potential for many community benefits such as showcasing the environmental significance of the region, sustainability and education opportunities, and for the local economy and jobs. The chance to help shape the future of Anglesea through the project was also identified.

At the same time, many people highlighted concerns about traffic management, and how we will balance visitors to the site and Anglesea while preserving the local environment. Others wanted to know how they can stay involved and what opportunities there are for further input.

There is a great desire for more information about the concept design as it develops and a strong call for us to continue engagement with Traditional Owners. Many community members want to understand the potential impacts on the quiet coastal town they love.

The Eden Project has a great track record globally. It has experience working on multiple sites worldwide and this expertise will inform the development of the Eden Project Anglesea concept. Many of the issues and concerns raised by Anglesea community members have been raised in other communities and we are confident in our ability to address them in a local context.

It's really important to note that in addition to community support there are two critical enablers for the concept to develop further. Alcoa needs to obtain approval to resolve the Mine Rehabilitation and Closure Plan water strategy. We also need to determine who the planning authority will be and confirm the framework moving forward.

We continue to work on these two enablers and if we can get them right then we see this as just the beginning of our ongoing discussions with the community.

We see this report as one of many steps in engaging the community and reporting back on what we have heard and how it is shaping the concept's development.

So please, keep talking to us - we look forward to continuing the conversation.



A handwritten signature in black ink, appearing to read 'David Harland', written in a cursive style.

David Harland
CEO Eden Project
International Ltd



A handwritten signature in black ink, appearing to read 'W Sharp', written in a cursive style.

Warren Sharp
Anglesea Site Asset Manager
Alcoa of Australia

Executive Summary.....	iii	Concept design.....	19
Introduction	1	Indigenous community involvement.....	20
Methodology	2	Alcoa’s involvement.....	20
Engagement and communications summary.....	2	Project area	21
Community drop-in sessions.....	5	Water body quality and use	23
‘An Audience with Sir Tim Smit’	6	Mine rehabilitation	24
Feedback survey	6	Bushfire management.....	24
Community ‘Roundtables’	7	Project Funding.....	25
Consultation with other key organisations	8	The need for transparent community engagement.....	26
Alcoa Community Consultation Network (CCN).....	9	General project questions	27
Keeping people informed	9	Next Steps.....	29
Media coverage	9	Appendices.....	30
Feedback themes and responses.....	11	Thank you.....	31
General feedback.....	11		
Traffic management	12		
Local economy and tourism.....	13		
Protection of the natural environment.....	15		
Impacts on Anglesea’s character, lifestyle and infrastructure.....	16		
Education opportunities	18		



In May 2019 the Eden Project and Alcoa announced Eden Project Anglesea, *a concept for a world-class eco-tourism attraction within Alcoa's former mine site in Anglesea, Victoria*. *The first step was to 'to engage with as many community members and interested stakeholders as possible to inspire them to help ... develop the ideas for what could be their Eden Project in Anglesea'*¹.

Alcoa's Anglesea mining and power station operations closed in 2015. Planning began for remediation and closure of the site and in 2016 five Guiding Principles² for future land use at the site were developed with the community, including 'to value and complement the natural environment', 'to recognise, celebrate and honour the site's cultural and heritage values' and 'to ensure consistency with the future and character of Anglesea'.

With the guiding principles as a key input, Alcoa published the draft Mine Rehabilitation and Closure Plan³ in 2017 and the Freehold Concept Master Plan⁴ in 2018.

Alcoa wants to leave a positive and lasting legacy that provides a net benefit to the community. With a focus on environmental, economic and social outcomes, Alcoa sees the Eden Project Anglesea concept as an opportunity to bring the Guiding Principles to life, to provide community benefit through environmental, economic and social outcomes, and in a way that Alcoa and the community can be proud of.

The Eden Project is a UK-based educational and environmental charity and social enterprise. It works to engage people around the world in positive experiences and stories about the natural world to encourage them to live their lives more sustainably.

Eden Project International Limited (EPIL) is the global wing of the Eden Project, whose ambition is to create projects inspired by the original Cornish vision on every habitable continent on earth. On a global scale, the Eden Project works with foreign government departments, local supply chains and local cultures to promote the understanding and responsible management of the vital relationship between plants, people and resources. It is currently working on projects in China, Dubai, the USA and the UK⁵.

EPIL was aware of the Anglesea site, having been approached by numerous community groups, politicians and individuals about it over recent years.

When Alcoa approached EPIL about the possibility of exploring the concepts for the mine and the type of legacy that could be left at the site, the Eden Project Anglesea concept developed from a possibility to a viable concept, and community consultation began.

1 www.edenprojectanglesea.com.au

2 <https://engage-anglesea.alcoa.com.au/18030/documents/57419>

3 <https://engage-anglesea.alcoa.com.au/18030/documents/57413>

4 <https://engage-anglesea.alcoa.com.au/18030/documents/75446>

5 www.edenprojectanglesea.com.au

Eden Project and Alcoa commenced community engagement in May 2019, with the assistance of consultants Keep Left and Kismet Forward.

Feedback from these various consultations and communications form the basis of this report and data collected is available in the appendices.

Engagement and communications summary

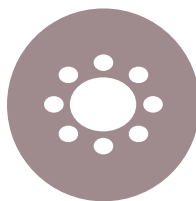
The following diagram summarises the engagement and communication activities that took place between 21 May – 18 June 2019, and the participation that resulted.

ENGAGEMENT ACTIVITIES AND COMMUNICATION



2
community
drop-in
events

2
formal
presentations
to community
stakeholders



10+
community/
stakeholder
meetings



feedback
forms/surveys



1100
letters to
households
and
businesses



website



330+
media hits,
monthly
updates in
local press

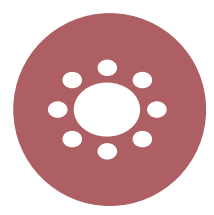


650+
contacts kept
informed
via emailed
updates

PARTICIPATION



~600 attendees of community drop-in events, resulting in
210+ post-it comments
100+ feedback wall comments
100+ recorded conversations
120+ attendees of formal presentations



120 participants at community/stakeholder meetings



400+ feedback forms/surveys



15+ emails from community members



3,000+ website visitors

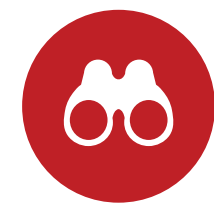
SURVEY RESPONDENTS



240+ permanent residents



80+ semi-permanent residents



80+ visitors/ others with a 'general interest'

Face-to-face consultation activities took place as follows:

Group/Forum participants	Date (2019)	No.
Wadawurrung Aboriginal Corporation	24 May	3
Surf Coast Shire	26 May	15
'An Audience with Sir Tim Smit' #1	26 May	57
'Economic' Roundtable	27 May	9
'Community' Roundtable	27 May	10
'Recreation' Roundtable	27 May	6
Drop-in Session #1	27 May	264
G21 Geelong Region Alliance	30 May	2
'Environment' Roundtable	30 May	14
'An Audience with Sir Tim Smit' #2	30 May	56
'Local interest and advocacy groups' Roundtable	30 May	10
Drop-in Session# 2	1 June	332
Alcoa Community Consultation Network meeting	17 June	51

Community drop-in sessions

Approximately 596 people attended two community drop-in sessions at the Anglesea Memorial Hall on 27 May and 1 June. These sessions were open to the general community and advertised through local newspapers, media releases, Alcoa and Eden Project websites and Alcoa's Community Consultation Network database.

Each session was scheduled to run for 2.5 hours and enabled attendees to view videos and displays about the Eden Project Anglesea concept and speak informally with members of the Eden Project and Alcoa teams. Interest was so strong that these sessions went for more than three hours each.

In addition to the hundreds of informal conversations Eden Project and Alcoa representatives exchanged with attendees (which were not recorded), three community engagement consultants recorded initial reactions and questions with 109 drop-in session attendees. These, along with 215 post-it notes of comments left by attendees are described in detail in Appendix 1.

The drop-in sessions also enabled participants to fill in a survey (see below) or provide feedback via a 'graffiti wall' under the following themes:

- My hopes for the future are
- I'm excited about
- I'm unsure about
- My personal dreams are

The graffiti wall feedback is shown in Appendix 2⁶.



‘An Audience with Sir Tim Smit’

A total of 113 local and other stakeholders attended two 90-minute invitation-only sessions at the Anglesea Memorial Hall on 26 and 30 May. Attendees heard from key personnel from the Eden Project, including Sir Tim Smit, Co-founder of Eden Project, David Harland, Chief Executive Officer of EPIL and Warren Sharp, Alcoa’s Anglesea and Point Henry Site Asset Manager.

The sessions were designed to give key stakeholders more detail about the proposed Eden Project Anglesea concept and an opportunity to ask questions. Attendees were encouraged to leave additional questions together with their details to enable the Eden Project and Alcoa to respond to concerns outside of the sessions and start a dialogue with community members. Attendees were also encouraged to complete a feedback survey (see below).

Responses provided to questions asked during the session are included in Appendix 1⁷.

Feedback survey

The feedback survey sought to understand respondents’ views on the Eden Project Anglesea concept’s key benefits, areas for improvement, and areas where more information was requested. The survey was distributed in hard-copy format at the four community events, and was available online from www.edenprojectanglesea.com.au.

Between 21 May and 18 June, 419 feedback surveys were submitted. This feedback is analysed in detail in Appendix 3⁸.

7 Kismet Forward (2019) *Eden Project Anglesea May/June 2019 Community Sessions: Summary of Feedback*

8 Keep Left (2019) *Eden Project Anglesea Feedback Survey Analysis Report*

Community 'Roundtables'

Five Roundtables hosted by Eden Project and Alcoa representatives were held in May 2019. The intent of these forums was to enable Eden Project representatives to find out more about the community and to enable community representatives to speak directly with them. Participants were also given a tour of the Alcoa mine site.

Similar interest community groups were invited to nominate participants for these sessions based on the following themes:

- Community
- Recreation
- Economic
- Environment
- Local interest and advocacy groups



The sessions were attended by 49 individuals representing 25 organisations including:

- ANGAIR
- Anglesea & District Historical Society
- Anglesea Baptist Church
- Anglesea Bike Park
- Anglesea Bowls Club
- Anglesea Community Energy
- Anglesea Community House
- Anglesea Community Network
- Anglesea Heath Consultative Committee
- Anglesea Lions
- Anglesea Men's Shed
- Anglesea Paddleboards
- Anglesea Primary School Council
- Anglesea Surf Life Saving Club
- Baptist Camping
- Business and Tourism Anglesea
- Friends of the Eastern Otways
- Go Ride A Wave
- Great Ocean Road Regional Tourism Ltd
- Parks Victoria
- Save Anglesea
- Surf Coast Air Action
- Surf Coast Energy Group
- Surf Coast Mountain Bike Club
- Surf Coast Shire

Appendix 4 describes the main discussion points for each Roundtable session.



Consultation with other key organisations

Wadawurrung Aboriginal Corporation

Eden Project and Alcoa acknowledge that Wadawurrung are the Traditional Owners of the land where the former mine and power station are situated.

As the priority, the community consultation process commenced with Eden Project and Alcoa representatives meeting first with the Wadawurrung Aboriginal Corporation⁹ to brief them on the project and discuss opportunities for ongoing Wadawurrung involvement in the planning and development of Eden Project Anglesea.

Surf Coast Shire

Alcoa's former mine and power station site is located in the municipality of the Surf Coast Shire¹⁰. Eden Project and Alcoa representatives provided a briefing to the Mayor, Councillors, CEO and senior executive of the Council. Additionally, a range of Surf Coast Shire representatives participated in other community events and activities throughout the consultation period.

G21 Geelong Region Alliance

G21 Geelong Region Alliance is the formal alliance of government, business and community organisations working together to improve the lives of people within the Geelong region across five municipalities – Colac Otway, Golden Plains, Greater Geelong, Queenscliffe and Surf Coast¹¹.

Eden Project and Alcoa representatives provided a briefing to the Chair and CEO.

⁹ www.wadawurrung.org.au/

¹⁰ www.surfcoast.vic.gov.au

¹¹ www.g21.com.au

Alcoa Community Consultation Network (CCN)

Alcoa runs a bi-monthly community consultation meeting to discuss the site's decommissioning and rehabilitation activities. In June, as part of providing preliminary feedback on the recent engagement process, EPIL's CEO David Harland joined the CCN meeting via video link to answer questions raised by attendees. Minutes from the meeting are in Appendix 5.

Keeping people informed

A range of communication methods was implemented to build broad awareness of the concept and encourage people to participate in the community engagement opportunities.

This phase of community engagement was initiated through a written invitation to 1,100 Anglesea households and businesses and included local newspaper advertising, media coverage and email advice to Alcoa's community database.

A key method included the establishment of www.edenprojectanglesea.com.au to provide all relevant information about the concept including the Eden Project Anglesea concept video, information and images presented at the community events, frequently asked questions and a link to the feedback survey.

Eden Project and Alcoa will continue communicating and engaging via these methods and are open to feedback on ways to communicate better.

Media coverage

Media coverage was an important way to extend the awareness of the Eden Project Anglesea concept and the community engagement opportunities. The coverage was extensive with 332 pieces of media coverage across local, metropolitan and national press, radio, television and online platforms.

WEATHER! 20°C **Geelong Advertiser** Wednesday, May 22, 2019 \$1.70

ECO PARK VISION

\$150M PLAN FOR ANGLESEA ALCOA SITE

ANGLESEA'S former Alcoa mine could become a \$150-million eco-tourism attraction.

The US-based Eden Project, a charity with a similar site in Cornwall, REPORT PAGE 13

THE AGE

Is this Anglesea's eden?

Radio MELBOURNE

"Resources giant Alcoa wants community feedback about its proposed rehabilitation of the 325-hectare Anglesea site"

NATIONAL VICTORIA TOURISM THE AGE

World's indoor rainforest creator to transform Anglesea mine

A new standard set for minesite rehab

NEWS

Eden Project's grand plans to transform disused Anglesea coal mine into eco-tourism attraction

"With thousands of mine sites across Australia, communities around the country will be watching with interest to see whether this ambitious project can get off the ground."

CORANGAMITE TOO CLOSE TO CALL PAGE 1 CHANGE TO GRAN FONDO ROUTE PAGE 6 SAFE LAND PLAN FOR KANGAROOS PAGE 7

BELLARINE & SUN COAST

echo

REVEALED: \$150m makeover for Alcoa mine site

ANGLESEA'S NEW EDEN?

Follow us on Facebook, Instagram and Twitter @echoandpaper

Herald Sun

It's Eden by the sea

The Guardian

Eden Project plans \$150m ecotourism site for Victorian coalmine

3AW 693
NEWS TALK

Feedback was largely consistent across all the engagement forums outlined in the Methodology. There was genuine excitement and interest in the Eden Project Anglesea concept and many questions about the opportunities for ongoing involvement.

Analysis of the feedback received across all of the consultation activities, as detailed in the appendices to this report, has enabled the distillation of the following themes:

1. General feedback
2. Traffic management
3. Local economy and tourism
4. Protection of the natural environment
5. Impacts on Anglesea's character, lifestyle and infrastructure
6. Education opportunities
7. Concept design
8. Indigenous community involvement
9. Alcoa's involvement
10. Project area
11. Water body quality and use
12. Mine rehabilitation
13. Bushfire management
14. Project funding
15. The need for transparent community engagement

General feedback

There was a general overall sense of positive enthusiasm for the Eden Project concept for Anglesea. Many people felt that the project was a positive fit for the site in terms of EPIL's environmental and social responsibility as well as being community minded, visionary and exciting.

Many people expressed excitement about the benefits the project could have on the local economy and jobs, particularly through tourism. Others were pleased about the positive impact of sustainability and environmental education and the opportunities the concept could offer to young people and school groups. Some participants in the engagement process cited the chance to showcase the Anglesea Heath as a great opportunity. The sustainability credentials of Eden Project were commended.

While feedback was primarily very positive, some concerns and questions were raised about the Eden Project Anglesea concept. Those most commonly expressed focused on traffic, impacts on Anglesea's character, lifestyle and infrastructure, the need for transparent community engagement, partnerships with and impacts on local businesses, Indigenous community involvement, tensions between tourism and the protection of the natural environment and design components.

An overwhelming sentiment was the desire of community members to be involved in the concept as it evolves, and many advocated for further community engagement opportunities and partnerships with local organisations.

Traffic management

The need to manage a potential change in traffic conditions, and/or to use the delivery of Eden Project Anglesea as a catalyst for traffic management change, was highlighted by many members of the community. Some people were concerned that the existing road infrastructure would not cope with an increase in traffic, that current congestion in Anglesea would be exacerbated and/or that tourists would be directed onto local roads in order to access the Anglesea township. There was a call for details of how traffic would be managed, including in case of an emergency. Others felt that traffic was already an issue for Anglesea and shouldn't stand in the way of the concept progressing. Road infrastructure, site access and egress, and minimising traffic congestion were identified as key issues which need to be managed appropriately.



Often the solutions come from the local community

The Eden Project team agree that traffic is always a key consideration with any Eden Project - or other - development. *'Similar issues and concerns have been overcome in Cornwall and we believe this can be managed here, particularly considering the use of the existing Coalmine Road access from the Great Ocean Road.'*

The project plans to attract those already passing through on the Great Ocean Road and does not anticipate bringing any extra vehicles to local roads.

Both Alcoa and the Eden Project team feel it is important to work with the community to determine the way visitors to Eden Project Anglesea are able to also access or interact with Anglesea. Often the solutions come from the local community, as was the case with the Eden Project in Cornwall.

There have been some early discussions with local government and initial traffic assessments are underway. The Eden Project team and Alcoa will work closely with both traffic consultants and the community, Council and the other key stakeholders to ensure a robust plan is developed that could be implemented.

Local economy and tourism

Many local business owners want to understand the potential impact on their businesses. Other community members want to know about employment opportunities and about Eden Project's procurement and employment policies, with a desire for local people and businesses to be prioritised. Many businesses and service providers in Anglesea work in partnership with each other for mutual benefit and community members are keen to know if Eden Project Anglesea will also provide such opportunities. Some community members are concerned that local businesses will suffer if in competition with the project. The Eden Project Anglesea could offer many benefits to the local economy, but there is a strong feeling that this can only be done through collaboration and genuine partnerships.

The Eden Project team and Alcoa have a joint belief in the need and power of working with local businesses for the betterment of both the project and the local community.

It is hoped that Eden Project Anglesea will be a catalyst for the broader community. The Eden Project Anglesea concept is modelled on 750,000 visitors annually and 300+ year-round direct jobs and many more in the supply chain. The economic impact model used for Anglesea is similar to that of Cornwall, in which there has been more than £2 billion economic impact directly to the region since the attraction opened in 2001.

Eighty per cent of the products used in the Eden Project in Cornwall are sourced from local suppliers. To support its suppliers, the Eden Project allows them to use its brand in the broader market. *'We want to partner with local businesses in Anglesea and, in doing so, strengthen everyone's businesses.'*

The Eden Project in Cornwall has seen a positive influence on its region in terms of the advent of quality accommodation, restaurants, galleries and other businesses. It has also attracted locals who had moved away to return to the area for employment. Local universities now enjoy a higher calibre of tertiary students wanting to study in an environmentally and socially responsible region.

The Eden Project team wants to tap into the regional tourism market by encouraging existing tourists who are heading down the Great Ocean Road to stay an extra day and visit the site. There are currently 5.8 million visitors to the 12 Apostles¹² annually and this is projected to increase to 10 million by 2028 with or without Eden Project Anglesea. *'Anglesea is currently experiencing the disadvantages associated with that visitation without gaining any of the advantages. Therefore, the aim is to slow people down to visit attractions along the way. The challenge is to build the infrastructure that allows for the accommodation of those numbers.'*

In Cornwall the Eden Project had to build up its offer to schools and one of the things that excites the Eden Project Anglesea team is the existing local school camps. *'In early discussions we have been told a day out at Eden Project Anglesea would add value to school children visiting the camps already.'*

The Eden Project team is aiming to keep all services as in house as possible. *'People aren't always aware, but we employ paramedics, teachers, accountants, energy managers, logistics workers and caterers. By doing this we can better influence the way Eden Project Anglesea is run and provide year-round, high-quality employment.'*

Eden Project Anglesea will have a retail offer but not a normal tourist shop, and it will have catering facilities for patrons and staff. The Eden Project team is not looking to compete with any existing businesses in the area, and where this is of interest it would look to work with them or signpost its visitors to them.



Protection of the natural environment

While the positive impacts of tourism are welcome, many community members do not want this to be at the detriment of the natural environment. Some community members question how the Eden Project Anglesea concept will resolve the tension between remediating the land and impacts of buildings and increased tourism. The opportunities to showcase the Anglesea Heath and other indigenous plants to the world was a common area of feedback. Many were hopeful that the concept could look to support the protection of indigenous fauna, such as by providing appropriate fencing, or that the concept could include native animals in a more formal way.

Both the Eden Project team and Alcoa believe that the Anglesea site has the capability to inspire people to make life-changing environmental and social decisions and that the greater the numbers reached, the greater the potential for wide-ranging positive impacts in the broader community.

'Eden Project Anglesea would be a failure if it created a great environment in one location whilst destroying the environment around it and the character of Anglesea and the region.'

In terms of protecting existing flora and fauna, the Eden Project team has committed to send out a research team in the near future and groups such as ANGAIR will be a key part of this research.

During the recent visit to Anglesea, local community members took the Eden Project team on a tour of the local environment, including the Anglesea Heath and marine environments. It is the intent of the Eden Project team to showcase these ecosystems and *'bring to life the elements that shape the world we live in and to demonstrate that we are a part of nature, not apart from it.'* The Eden Project team is also engaging with a number of university experts and are discovering a number of research stories the project team is excited to tell.

“

It is the intent of the Eden Project team to showcase these ecosystems and 'bring to life the elements that shape the world we live in and to demonstrate that we are a part of nature, not apart from it.'



Impacts on Anglesea's character, lifestyle and infrastructure

Anglesea is much loved by its community and there are concerns for some that the Eden Project Anglesea concept may negatively impact the character of the town. Many community members ask what modelling has been done to understand the potential impact on the town. Others are interested in what impact other Eden Projects have had on other communities and whether governments have been required to assist. There was support for the Eden Project's low-impact designs as sensitive to the area, while others disagreed, with concerns about overdevelopment, and requests for a scaled-back design or no development on the site at all. There is also significant interest and excitement about the positive benefits it may bring.

Both the Eden Project team and Alcoa believe that the The Eden Project team believes that the Eden Project and the quiet coastal Anglesea township can co-exist either through creating connections that allow people to come into Anglesea so that the town can reap the benefits, or through lessening those connections. Given the differing views on this issue, it is critical to find a solution that works.

'Our experience in Cornwall shows us it's possible to transform a former mining landscape and create a place that celebrates our natural world, educates and entertains people from all walks of life, while providing a year-round positive impact for the community.'

The Cornwall region is a tourism location with approximately 4.5 million visitors per year. Around one million people visit the Eden Project in Cornwall per year. Whilst the small surrounding villages in Cornwall have not changed a lot physically, there is now an increased level of confidence and character in these towns. Other Eden Project developments have had different but equally positive outcomes. For example, the Eden Project in Costa Rica, a rural-based economy, is aimed at creating an environment where local farmers can grow niche crops inside the rainforest to produce value-added products. The Eden Project in Qingdao, China, is aimed at creating a marine technology and research venue whereby Qingdao and the university within it, becomes a centre of expertise for that research.

The Eden Project team is aware that it needs to be conscious of the local impacts on Anglesea and acknowledges it is at the early stages of understanding what that means. It sees that the challenge will be to work out how to achieve economic, environmental and community enhancement without also bringing undesirable outcomes. Both the Eden Project team and Alcoa want to keep listening and working with all those who reside in and use Anglesea.

The Eden Project team notes that while the Eden Project Anglesea concept encourages visitors to stop and stay, bringing the local economic and social activity benefits of tourism, it also understands that not all local businesses desire this.

‘As an example, The Lost Gardens of Heligan in Cornwall is surrounded by three small villages and, whilst local businesses are able to advertise at the site, it is their decision as to whether to encourage visitors to their premises.’

Infrastructure such as power, sewerage and roads are key considerations in developing a concept such as this. Both Alcoa and the Eden Project team understands the need to get these aspects right. Initial assessments are underway and will be developed further as the concept develops.

“

Both the Eden Project team and Alcoa want to keep listening and working with all those who reside in and use Anglesea.

Education opportunities

Many community members saw the Eden Project Anglesea concept as a welcome addition to and an amplifier of the existing educational opportunities in Anglesea. It was also seen as a potential drawcard for school groups outside the local area. Members of the community see the value of educating people about the natural world and sustainability and are keen to explore ways for Eden Project Anglesea to partner with schools, camps and other education providers including collaborating with tertiary institutions.

Eden's mission is to connect people to the natural world, and the education focus is to blend arts and science and traditional thinking.

Alcoa and the Eden Project team understand the strong 'camping economy' in Anglesea, amassing around 40,000 visits each year to the school camps with 1,000 beds. In early discussions the project team was told that a day out at the Eden Project Anglesea would add value to school children attending the camps already.

"We see great benefits in creating an attraction for the many school camps and encouraging visitors to stay longer to experience all the area has to offer."

The Eden Project team intends to engage with Anglesea Primary School, other local schools and the local camps. Research opportunities with tertiary institutions will be explored.

At Eden Project in Cornwall around 50,000 school students visit each year. Many are from the local area, but a significant number come from further afield including many international visits. In Cornwall the program is linked to the formal curriculum.

"We like the idea of taking people on a journey into the natural world and will achieve this through pavilions (earth, fire, air and water) and using technology such as augmented reality to tell stories. Eden Project works with the world's best creatives to bring to life these types of experiences."

ANGAIR has amassed a great deal of wonderful research – how can we work together to make this available to the community?

Sir Tim Smit on Eden in Cornwall – *"We wanted Eden to be the best classroom in the world. We wanted it to be a place where you learn effortlessly... it is a provocation to see things afresh. It is for school children, captains of industry, rock stars, students, apprentices, it is for everybody. The message of Eden is that the future remains ours to make."*

Concept design

Many community members are very interested in the overall design of the Eden Project Anglesea concept, regarding both the look and scale. There was a strong sentiment for the built form to be low-impact, architecturally responsive and sensitive to the surrounding natural environment. Its potential to be self-sufficient in terms of energy use was exciting for many and the desire to showcase environmentally sustainable practices within the concept and its ongoing operation was commonly raised. Some community members were hopeful of the potential for the site to showcase renewable energy technologies and to supply Anglesea with clean energy. Community members are keen to understand how much involvement they can have in decision making regarding the design. There is great interest in getting more design information in general.

To date the Eden Project team has produced a number of concept images. Apart from the 'apostle', which is proposed to emerge from the water body, the remaining built form will be low impact and nestled into the existing landscape and topography. There is no intention to build anything that can be seen over the ridges of the mine.

The total Eden Project Anglesea concept site is approximately 40 hectares, and the actual physical built form (including pavilions, paths, car parks) comprises less than 10 per cent of that overall footprint.

As part of the next steps, more detailed concept designs need to be developed, incorporating aspects such as built form and scale principles. The community will be further engaged on these aspects.

The Eden Project team aims to drive sustainability to the highest level. The buildings will be exemplary and will go beyond carbon-neutrality with a vision of being carbon positive. The idea of the site being 'off grid' is an exciting proposition that the team is keen to explore. A key feature of Eden Projects is that they are not copies but are important parts of a jigsaw that can inform and be informed by other Eden Projects around the world.

'This will be an Australian Eden Project and the more local people can be involved, the better the outcome and we will continue to consult closely with the community as the design develops.'

“

The Eden Project team aims to drive sustainability to the highest level

Indigenous community involvement

Many members of the community believe that genuine engagement and collaboration with Traditional Owners is critical. Many people wanted to know if the Eden Project team and Alcoa have engaged with Traditional Owners and whether there are plans to work with them on an ongoing basis.

The Eden Project and Alcoa team had positive early discussions with the Wadawurrung during their May 2019 visit and are excited about working with them in an appropriate and exemplary way. The team is committed to work with the Wadawurrung to determine the best way for them to tell the cultural heritage story and be part of the project team.

Local Alcoa team members have also recently participated in cultural education with Traditional Owner Corrina Eccles, and Eden Project team members will do so when they are next in the country.

“

The team is committed to work with the Wadawurrung

Alcoa's involvement

Members of the community would like to understand the role of Alcoa in the Eden Project Anglesea. People ask why Alcoa wants to have an Eden Project on its site.

As emphasised throughout its previous and ongoing engagement with the community, Alcoa supports the transition of its landholdings to future uses which benefit the Anglesea and wider regional economy, environment and community while acknowledging its significant cultural heritage, environmental values and industrial past.

The Eden Project Anglesea concept brings this transition to life and reflects the guiding principles Alcoa developed in partnership with the Anglesea community in 2016 to shape the transformation of the former mine site. It also aligns well with the Victorian Government's Anglesea Futures Land Use Framework.

The concept presents an outstanding opportunity to showcase the site's unique natural values while making a significant and lasting contribution to the region for generations to come.

Alcoa sees that the Eden Project has a wealth of experience in environmental, social and economic regeneration and is recognised globally for creating landmark eco-tourism facilities and experiences.

'The Eden Project Anglesea concept is consistent with our view of leaving a legacy for Anglesea and the region that provides long term community benefit through ongoing economic development, training and jobs, together with long term environmental benefits.'



Project area

It is important for community members to understand the area that would be used by the Eden Project Anglesea, including the extent to which the former Alcoa mine site would be incorporated. Many community members want to know if the tall chimney stack will be incorporated into the design and are also keen to know if the power station is part of the concept.

The Eden Project Anglesea concept is set within Alcoa's former mine site, adjacent to the water body (refer to the image).

The key vision of Alcoa's draft Anglesea Mine Rehabilitation and Closure Plan is the rehabilitation of the mine void to form a large water body, extensive rehabilitated areas, and to provide access for potential future alternative uses of the land adjacent to the mine. It is intended that shared trails will eventually run around the entire extent of the former mine.

The tall stack is located on Alcoa freehold land at the former power station site, not on the former mine site area where the Eden Project Anglesea concept is located.

As part of future land planning, Alcoa has retained the tall stack for the time being to allow for consideration of possible repurposing options for the structure. This could include as a lookout, for public art, a sundial, or a zip line to the mine site. If no genuine opportunity to repurpose the structure is determined Alcoa will remove it.

The former power station is not part of the Eden Project Anglesea concept however Alcoa wants to work closely with the community and local businesses to create a valued visitor and parkland destination that offers a range of community facilities to complement the Anglesea community and environmental values of the site.

As outlined in the Alcoa Freehold Concept Master Plan, the power station site would complement the Eden Project Anglesea (referred to in the Plan as an 'eco-tourism concept at the former mine site'), and link into the Anglesea township.

The proposed precinct would include a range of facilities such as an elevated observation tower, orientation shelters, picnic spaces, play spaces, walking and cycling paths, recreation areas and activities, as well as tourism accommodation and retail uses.

If the Eden Project Anglesea concept is realised, it would create an opportunity for Eden Project to provide their input into the power station site development.

The remainder of Alcoa's freehold landholdings in Betleigh/Wilkins Streets and Fraser Avenue are not part of the Eden Project Anglesea concept. The Alcoa Freehold Concept Master Plan provides Alcoa's vision for these areas including a proposed residential area in the Betleigh/Wilkins Streets precinct, and each area is also included in the Anglesea Futures Land Plan.



Water body quality and use

There are questions from community members about the source, use and quality of water in the water body and how it will be incorporated into the Eden Project Anglesea concept. Many people want to understand where the water to fill the water body will come from and if it will be suitable for recreational use. Some raised concerns about the value of a body of water that could not be accessed by the community or used for recreational purposes.

In the draft Mine Rehabilitation and Closure Plan Alcoa proposed that water body filling would be by restoring the ephemeral Salt Creek back along its original course into the mine void, with the potential for long term connectivity to the Anglesea River.

Based on long term Salt Creek average flows the proposed fill time is approximately five to seven years to achieve an aspirational water quality of pH 5 or better (which is better than Salt Creek). The strategy is underpinned by extensive geotechnical, geochemical and hydrological investigations and analysis that has been independently peer reviewed.

This could also provide a long-term solution for the State's Anglesea River height management strategy to maintain the water level and health of the lower Anglesea River given its importance to the community and Anglesea economy, particularly in the summer months.

The stored water can be accessed at any time to further support the environmental requirements of the river system or for firefighting requirements.

'The water body is an integral aspect of the Eden Project Anglesea concept and we are seeking resolution on this matter as a priority.'

While the final decision about the long-term recreational use of the water body will be determined by DELWP, Alcoa's strategy does not propose that the water body will be suitable for recreational activities. The Eden Project Anglesea concept does not include recreational use of the water body.



The water strategy is underpinned by extensive geotechnical, geochemical and hydrological investigations and analysis that has been independently peer reviewed.

Mine rehabilitation

Community members want to understand the Eden Project Anglesea's involvement in and/or impact on the rehabilitation of the mine. Many members are very positive about the symbolic message of transitioning a former fossil fuel coal mine to a place that educates people and tells a positive message about the environment.

The rehabilitation and closure of the mine is Alcoa's responsibility and Alcoa is funding all of the related rehabilitation works. Alcoa's draft Anglesea Mine Rehabilitation and Closure Plan outlines the rehabilitation of the mine void to form a large water body, extensive revegetated areas, and access for potential future alternative uses of the land adjacent to the mine.

The Eden Project Anglesea concept is in addition to those works and Alcoa has funded the project work to date. The Eden Project Anglesea concept will be located on part of the rehabilitated mine site.

Bushfire management

Many community members are concerned about the management of bushfire risk, in terms of safety for site visitors and surrounding communities. Anglesea and its surrounds are considered to be situated in a high fire risk area and people want to understand how this risk will be managed.

Fire risk and management is a key consideration as part of planning in terms of both building detailed design and emergency response procedures. The Eden Project team and Alcoa will also work closely with local emergency services to ensure a robust plan is developed and put in place.

The Eden Project Anglesea concept will have a low impact and Alcoa's ongoing revegetation work adheres to community safety requirements to mitigate fire risk to Anglesea.

It's also well documented that the potential water body could provide a fire break, and a significant source of firefighting water for the region if required.

Project Funding

Many members of the community wanted to clearly understand the funding model. People want to know who is funding the project and who will profit from it. Others are concerned about ongoing maintenance and refurbishment costs, and the potential for these costs to fall back on the community or government if the Eden Project Anglesea is not self-sustaining.

The initial estimated cost of construction will be approximately \$150 million. The Eden Project team said this would be funded through a social investment model that attracts investors wanting to see social and environmental gains from their investment. Thereafter, the project will sustain itself with the recurrent budget funded by ticket entry and facility use. Capital refresh in the form of subsequent capital works is built into the operating budget. This model has proven successful in the UK. The Eden Project curates quality experiences that generate healthy visitor numbers all year round, not just in peak periods. This makes the enterprise financially viable.

Ticket entry prices haven't been determined yet. More detail will be available as the concept develops. At Eden Project in Cornwall, different entry prices are set for various sectors such as locals, tourists and school groups, and memberships are offered to residents to encourage them to use the facilities frequently.

'This has created an environment where the local community is contributing to the development of the site's culture, to the extent that local community members are now curating various parts of the site. Local passes are being used 3.5 times per year on average. To facilitate local people using the Anglesea site, the project team would be keen to allow free entry for Anglesea residents for the first couple of years with discounted yearly tickets thereafter.'



The need for transparent community engagement

Many community members are very keen to be involved in aspects of Eden Project Anglesea and want to understand the opportunities for engagement. People would like to fully understand the decision-making process that will determine if the Eden Project Anglesea will proceed. Some people are concerned about if and how feedback would be used, while others are worried that feedback would not be transparent. Community members stated that openness and transparency in all aspects of consultation are key to progressing the project.

Community engagement is very important to the Eden Project and Alcoa. Eden Project in Cornwall would not have been built or imagined without collaboration with neighbours.

This initial consultation period has demonstrated that there is a lot of interest in and support for the concept and it is important to continue engaging with the community. Both the Eden Project team and Alcoa are committed to genuine and open conversations with the community and all stakeholders.

'This will be an Eden Project in and of Anglesea and the more local people who can be involved, the better the outcome.'

Within the Anglesea community there are permanent and non-permanent residents, more than 50 community

groups, visitors and tourists and many other interested parties. Many of these important stakeholders have been represented in the consultation so far.

The project team needs to determine how to capture the range of interests and level of energy to move the concept into the next phase.

It is important to remember that this is not at the project stage and there are a number of steps that need to be undertaken to progress the Eden Project Anglesea concept.

Please see the Next Steps section for a full overview of what needs to happen before the project can progress.



Both the Eden Project team and Alcoa are committed to genuine and open conversations with the community and all stakeholders.

General project questions

Many community members acknowledged that the planning and regulatory framework for the Eden Project Anglesea may take a significant amount of time to establish and wanted to know how long the Eden Project was prepared to wait.

The Eden Project Anglesea concept must work within the planning and regulatory framework that exists and while the Eden Project team is prepared to wait while it is sorted out, these projects do require momentum and there is a need to progress as quickly as possible.

'Projects of this scale need planning and regulatory certainty and there are some outstanding conditions that are necessary for the project to move forward. Whilst we believe these issues can be dealt with, they require a will and desire from a number of people to make that happen and there needs to be forward movement on all of those points. If it is still merely a concept in 6 to 12 months' time, it will have failed.'

There is curiosity from many community members about why the Eden Project chose the Anglesea site when there are other potentially equally suitable sites in Australia and across the world.

The Eden Project was approached a number of times about the Anglesea site. It scrutinised Alcoa's draft Mine Rehabilitation and Closure Plan and considered that Alcoa was taking its legal obligations seriously. While the Eden Project is about connecting people to the natural world, not about undertaking mine rehabilitation projects, it liked Alcoa's approach. *'We are attracted to working with a company like Alcoa that is trying to do the right thing.'*

The proposed creation of a water body provides a backdrop to the project that is different from other sites that have been offered to the Eden Project. This site has other attractive conditions, including its distance from Melbourne, the number of visitors travelling down the Great Ocean Road, interesting geography, biodiversity and a great story to tell.



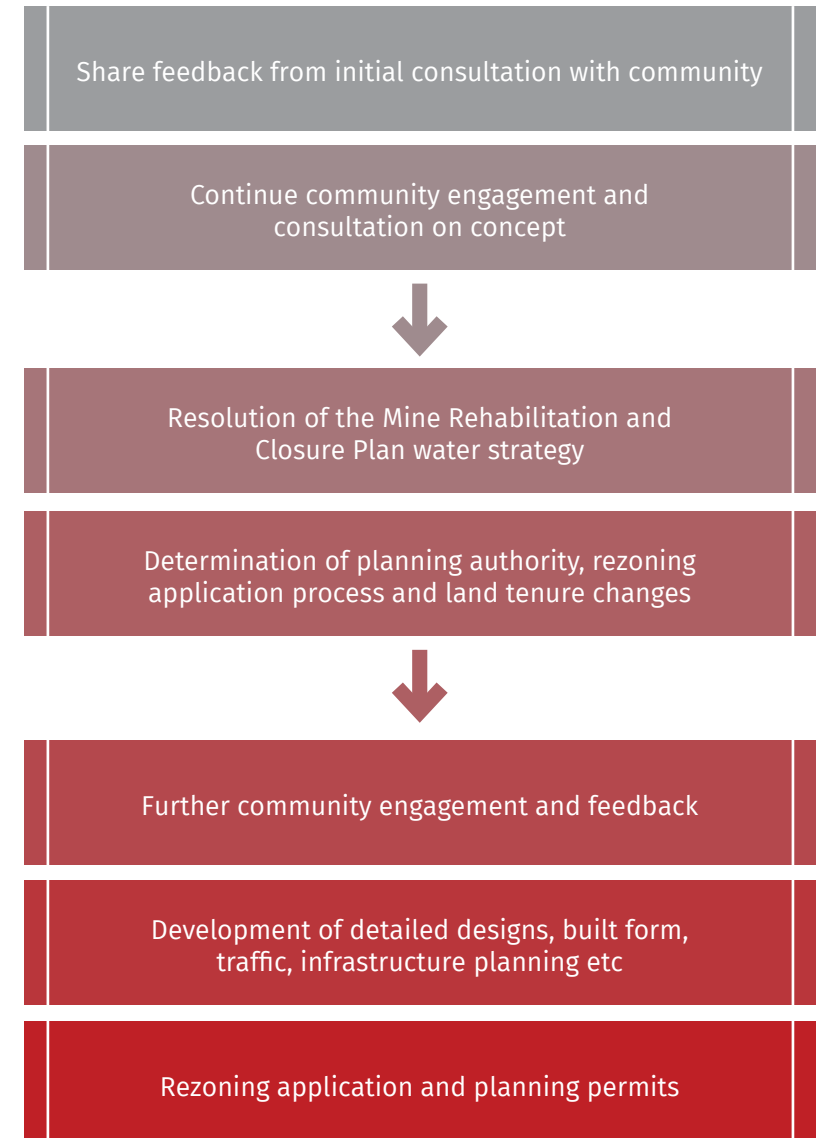
Since 2016 Alcoa has been engaging with community members on: the Guiding Principles for future land use planning (September 2016); Draft Mine Rehabilitation and Closure Plan (September 2017); Alcoa Freehold Concept Master Plan (March 2018); and the Eden Project Anglesea concept announcement for community consultation (May/ June 2019).

Building on this engagement, there are several steps that need to be undertaken to further develop the Eden Project Anglesea concept and to facilitate the strategic development of Alcoa's freehold landholdings. Community engagement will continue to be a key part of each step and Alcoa and Eden Project will engage with Government, community and key stakeholders including Traditional Owners Wadawurrung.

Over the next six months, the Eden Project team and Alcoa will seek to further understand areas for improvement, address concerns, as well as exploring ideas and the potential for partnerships and collaborations to enhance the concept.

The resolution of water and planning processes are a priority during this period.

Alcoa, with oversight support from Eden Project, will also undertake further development of the Alcoa Freehold Concept Master Plan for future use of the former power station site in consultation with the community and key stakeholders.



The following appendices to this report provide more detail in relation to community feedback:

1. Keep Left (2019) *Eden Project Anglesea Feedback Survey Analysis Report*. This report details Keep Left's analysis of the survey of 419 members of the community.
2. Kismet Forward (2019) *Eden Project Anglesea May/June 2019 Community Sessions: Summary of Feedback*. This report provides an overview of the Kismet Forward facilitated community engagement opportunities and outcomes.
3. Keep Left (2019) Graffiti Wall Comments. This document details the comments left on the Graffiti Wall at the community drop-in sessions.
4. *Roundtable session summaries*. This document provides an overview of the five community Roundtables hosted by Eden Project and Alcoa representatives.
5. *Alcoa Community Consultation Network June 2019 minutes*. This document is the minutes from the June meeting of Alcoa's bi-monthly community consultation meeting which discusses the site's decommissioning and rehabilitation activities.

Each of these reports is available at www.edenprojectanglesea.com.au.

Eden Project and Alcoa sincerely thank all participants who gave up their time to share their ideas, give feedback and raise questions.

The objective of the engagement process was 'to engage with as many community members and interested stakeholders as possible to inspire them to help us develop the ideas for what could be their Eden Project in Anglesea'.

Genuine engagement and absolute transparency are key to moving this concept forward. Both Alcoa and Eden Project are grateful for the many people that did engage and continue to show interest in the Eden Project Anglesea concept.

As the project planning progresses, the Eden Project team and Alcoa will continue to keep community members informed and provide opportunities for ongoing involvement and engagement.





eden project

www.edenprojectanglesea.com.au